



SecureWave
Sanctuary[®]
Safeguarding Tomorrow



Sanctuary Device
Scanner – v1.0

Liability Notice

Information in this manual may change without notice and does not represent a commitment on the part of SecureWave.

SecureWave S.A. provides the software described in this manual under a license agreement. The software may only be used in accordance with the terms of the contract.

No part of this publication may be reproduced, transmitted, or translated in any form or by any means, electronic, mechanical, manual, optical, or otherwise, without the prior written permission of SecureWave.

SecureWave claims copyright in this program and documentation as an unpublished work, revisions of which were first licensed on the date indicated in the foregoing notice. Claim of copyright does not imply waiver of other rights by SecureWave.

Copyright 2000–2006© SecureWave S.A.
All rights reserved.

Trademarks

Sanctuary is a trademark of SecureWave S.A.
All other trademarks recognized.

Phone: +352 265 364-11 (add 011 when calling from USA or Canada)
Fax: +352 265 364-12 (add 011 when calling from USA or Canada)
Web: www.SecureWave.com

Technical Support hours are Monday to Friday, 8:00 to 20:00 CET/CEST in Europe and 8:00 AM to 8:00 PM ET/EDT in USA.

You can contact our technical support team by calling:

+352 265 364 300 (International),
1-877-713-8600 (US Toll Free),
0-800-012-1869 (UK Toll Free)

or by sending an email to support@securewave.com

Alternatively, you can write to customer support at:
SecureWave Support
Atrium Business Park
23-ZA Bourmicht
L-8070 Bertrange
Luxembourg

Published on: November 2006
Sanctuary Device Scanner – v1.0



Contents

Before you install.....	3
No nonsense license agreement.....	3
TERMS OF USE	3
TITLE	3
TERMINATION	4
Overview	5
Notational conventions	5
Typographic conventions	5
Keyboard conventions	5
To contact us	6
Installation.....	7
Uninstalling Sanctuary Device Scanner.....	10
Finding your way around	11
Starting up Sanctuary Device Scanner	11
The program main window	11
The program menus	12
The File menu.....	12
The Tools menu.....	13
The Help menu	13
The Control Panel modules.....	14
Scans.....	14
Reports	15
Configuration	15
Scan ranges.....	15
Making an initial device scan	17
The Scans module	19
Scan parameters & details	19
Starting a scan	20
Log panel.....	21
Immediate scan	21
Reports	23
Generating a new report	24
To create a new report.....	24
Saving a report	25
Viewing old reports	25
Deleting old reports	26
Printing a report.....	26



The Configuration module	27
Filtered classes	27
To add a filter	27
To edit a filter	28
To remove a filter	28
Other available options	28
The Scan Ranges module	29
Adding, editing, or deleting ranges	29
Adding a rule	30
Deleting a range	31
Editing a range	31
Importing ranges	31
The Sensor service	33
Starting and stopping the service	33
Interactive sensor	34
Requirements and Limitations	35
Glossary	37
Index of figures	39
Index of Tables	41
Index	43



Before you install

No nonsense license agreement

This is a legal agreement between you and SecureWave SA covering use of the application known as Sanctuary Device Scanner.

Be sure to read the following agreement before using the software. IF YOU DO NOT AGREE WITH THE TERMS OF THIS AGREEMENT, DO NOT USE THE SOFTWARE AND DESTROY ALL COPIES OF IT IN YOUR CONTROL.

This User License Agreement ("Agreement") is a legal agreement between you (either an individual or a single entity) and SecureWave SA ("Company"). By installing, copying, or otherwise using Sanctuary Device Scanner ("Software") on any computer or device, you agree to be bound by the terms of this Agreement.

If you do not agree to the terms of this Agreement, you are not authorized to use the Software.

TERMS OF USE

SecureWave SA grants you a non-exclusive license to use the Software.

The Software tool is given FREE for unlimited use. You are free to copy it onto as many machines as you like and make as many copies as you need for your personal use.

This SecureWave product is provided to you free of charge and on an "as is" basis with no warranty on any kind or upgrades.

THERE IS NO WARRANTY OF ANY KIND EITHER EXPRESS OR IMPLIED. ALL WARRANTIES ARE EXPRESSLY DISCLAIMED INCLUDING, BUT NOT LIMITED TO, ANY WARRANTIES OF TITLE, MERCHANTABILITY, FITNESS FOR PARTICULAR PURPOSE, NON-INFRINGEMENT OR ARISING OUT OF A PARTICULAR COURSE OF DEALING. USE THIS SOFTWARE AT YOUR OWN RISK. IN NO EVENT SHALL ANY LICENSOR BE LIABLE FOR ANY CLAIM, DAMAGES, OR OTHER LIABILITY, WHETHER IN AN ACTION OF CONTRACT, TORT OR OTHERWISE, RELATING TO, ARISING FROM OR IN CONNECTION WITH THIS SOFTWARE OR ANY USE OF IT.

TITLE

Title, ownership rights, and intellectual property rights in Software shall remain with SecureWave SA. International copyright laws and treaties protect this Software.



TERMINATION

The license will terminate automatically if you fail to comply with the limitations described herein. On termination, you must destroy all copies of the Software and the Documentation on your control.



Overview

Device Scanner Tool is a search product that identifies devices connected to a specific computer(s) or domain. It is used as a pre-installation check up – identifying and prospecting the use and presence of all type of devices.

Notational conventions

The following symbols are used throughout this guide to emphasize important points about the information you are reading:



Special note. This symbol indicates further information about the topic you are working on. These may relate to other parts of the system or points that need particular attention.



Time. Used in a paragraph describing a 'short-cut' or tip that may save you time.



Caution. This symbol means that proceeding with a course of action may result in a risk, e.g. loss of data or potential problems with the operation of your system.

Typographic conventions

The following typefaces are used throughout this guide:

This typeface (*italic*) is used to represent fields, menu commands, and cross-references

This typeface (`fixed width`) is used to represent messages or commands typed at a command prompt

This typeface (`SMALL CAPS`) is used to represent buttons you click

Keyboard conventions

A plus sign between two keyboard keys means that you must press those keys at the same time. For example, ALT+R means that you hold down the ALT key while you press R.



A comma between two or more keys signifies that you must press each of them consecutively. For example 'Alt,R,U' means that you press each key in sequence.

To contact us

If you have a question that is not answered in the online help, documentation, or the SecureWave knowledge base, you can contact your SecureWave customer support team by telephone, fax, email, or regular mail.

Technical Support hours are Monday to Friday, 8:00 to 20:00 CET/CEST in Europe and 8:00 AM to 8:00 PM ET/EDT in USA.

You can contact our technical support team by calling:

+352 265 364 300 (International),
1-877-713-8600 (US Toll Free),
0-800-012-1869 (UK Toll Free)

or by sending an email to: support@SecureWave.com

Alternatively, you can write to customer support at:

SecureWave Support
Atrium Business Park
23-ZA Bourmicht
L-8070 Bertrange
Luxembourg



Installation

The installation process is direct and simple. To install the program:

1. Search for the included setup_devscan2.exe file and double click on it. This will execute the program displaying the first screen:



Figure 1: Installation: welcome dialog

2. Click on NEXT to proceed with the installation. You now need to accept the license agreement before proceeding. Read the terms and click on I accept the license agreement and then on Next to continue.



Figure 2: Installation: license agreement



3. In this next step, you define the installation folder. Click on BROWSE to change it.



Figure 3: Installation: installation folder

4. The next window starts the installation procedure. Click on NEXT to continue.

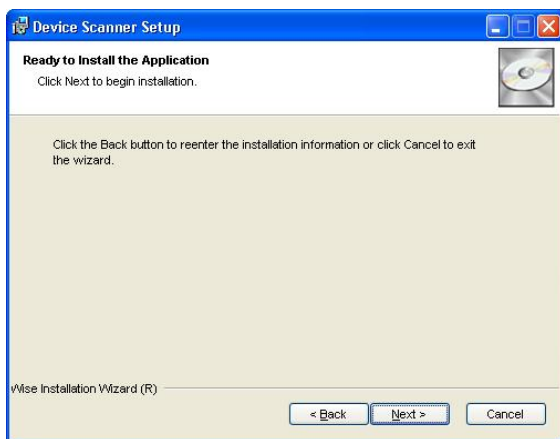


Figure 4: Installation: starting the installation procedure

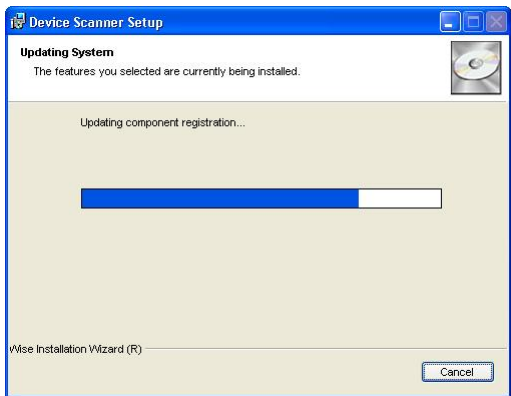


Figure 5: Installation: ending the installation

5. When the installation procedure has finished, the following screen is displayed. Click on “Finish” to exit the installation wizard.



Figure 6: Installation: completing the installation

6. You can now proceed to *Start → Programs → Sanctuary → Device Scanner → Device Scanner Console* to execute the tool. The other available options are described in *The Sensor service* on page 33.



Figure 6: Installation: Start menu shortcuts



Uninstalling Sanctuary Device Scanner

At any time after installing Sanctuary Device Scanner, you can uninstall it from your computer. Select *Add/Remove Programs* from the Windows Control Panel, and choose *Sanctuary Device Scanner* from the list of installed programs. The Setup program launches and uninstalls Sanctuary Device Scanner from your computer. You do not need to reboot the computer once finished.



Finding your way around

This chapter describes the different programs elements and how you can use them effectively.

Starting up Sanctuary Device Scanner

Once the program has been installed – see *Installation* on page 7 – you can proceed to *Start → Programs → Sanctuary → Device Scanner → Device Scanner Console* to start the program. You can also create a shortcut in Windows' desktop for your convenience.

The program main window

Once started, you see the Sanctuary Device Scanner window that has a standard Microsoft interface, which is easy to use and is one that most users are familiar with.

The following illustration identifies the various areas of the screen.

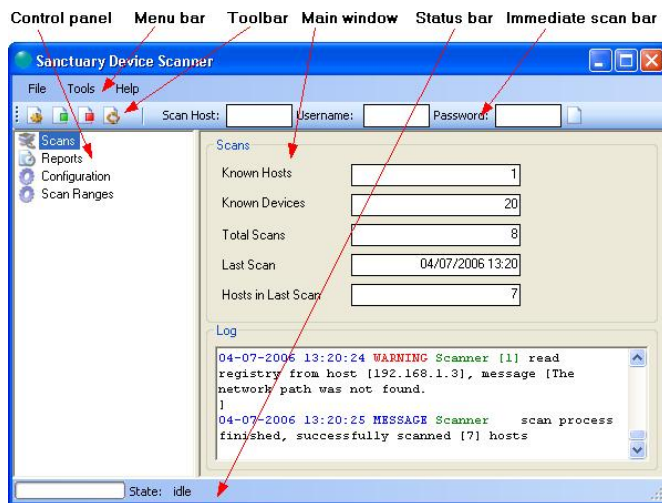


Figure 7: Program's window

The *Menu bar* in the upper part of the window lets you choose different functions and commands available. As with nearly all Windows' programs, you can use the



ALT key to have immediate access to the different commands. You can use, for example, ALT+TR to get refresh the main window.

The *Control Panel* lets you select among the several program modules:

- > Scans- to see your different scan results
- > Reports- to get a range of useful XML formatted reports
- > Configuration- to change program's options
- > Scan Ranges- to define computer(s), IP address ranges, or domain to scan

The *Toolbar* gives you immediate access to the tools otherwise provided by the *Tools* item located on the menu bar.

The *Main Window* changes depending on the *control panel* chosen module. It is context specific.

On the *Status bar* you can follow a scan progress or be informed about what the program is doing in each module.

You can use the *Immediate Scan bar* you can define a host, user name and password to do an immediate scan (by clicking on the icon located to the right)

The program menus

In the upper part of the window, you have the menu bar. In this bar, you can find the following items:

Menu	Used to ...
<i>File</i>	> Export actual scan with default name (XML format) > Exit the program
<i>Tools</i>	> Start a scan (search for connected devices). > Start or stop a scheduled scan. > Refresh the main window
<i>Help</i>	> Access this help file. > See program info.

Table 1: The three available menus in Sanctuary Device Scanner

You will find a brief description in the next sections.

The File menu

Use the *File* menu to save the list of known devices in XML format or to close the program.



You can choose between the following items:

Menu	Description
<i>Export to XML</i>	Allows you to save the actual scan in a XML format file.
<i>Exit</i>	Quit the Sanctuary Device Scanner program.

Table 2: The File menu items

The Tools menu

Use the *Tools* menu to start a scan, start or stop the scan scheduler, or refresh the main window screen.

You can choose between the following items:

Menu	Description
<i>Scan now</i>	You can start a new device scan. The filters defined in the <i>Scan Ranges</i> and <i>Configuration</i> windows are applied.
<i>Start Schedule</i>	Start the scan scheduler. The filters and options defined in the <i>Scan Ranges</i> and <i>Configuration</i> windows are applied.
<i>Stop Schedule</i>	Stop the scan scheduler.
<i>Refresh</i>	Update the main window screen.

Table 3: The Tools menu items

The Help menu

This menu, *Help*, is primarily used to access the help file menu. It also gives you information about the program's version and access to SecureWave's Web site:

Menu	Description
<i>About</i>	This item displays information about the current version of Sanctuary Device Scanner.
<i>Help Contents</i>	This command allows you to view the help file.
<i>SecureWave on the Web</i>	You can go to the SecureWave home page from here. There you can find updated information about Sanctuary Device Control and all our other products.

Table 4: The Help menu items



The Control Panel modules

Grouped on the control panel you will find the following modules:

Scans

When double clicking this option, a list of all computers and devices scanned is shown:

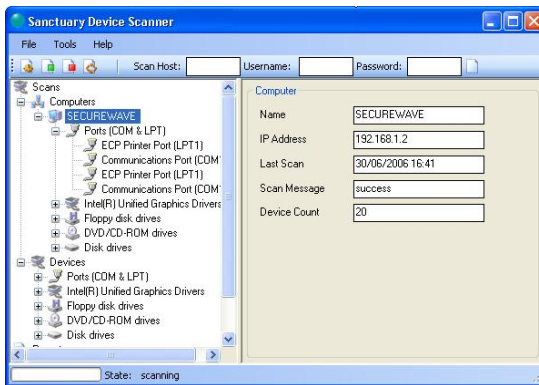


Figure 8: Example of a scan

No options can be changed here but you can use the Immediate Scan Bar to do a scan defining the required parameters (host, user's name and password). Device attributes are displayed only for information purposes. However, you can change the scan parameters using the *Configuration* or *Scan Ranges* modules. If you are on the first level of this module (Scans), you can trace the scan progress using the log panel:

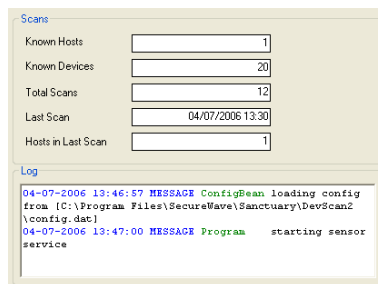


Figure 9: Scan trace in the Log panel



Reports

Use the *Reports* module to get the actual scan devices information classified according to several criteria.

You can choose between the following items:

Menu	Description
<i>Device list</i>	Use this command to obtain a report showing a complete device list.
<i>Devices by host</i>	Use this command to get a report ordered by host name.
<i>Devices by class</i>	This item lets you select a report classified by device class.
<i>Devices by bus</i>	Using this command, you can see a device list classified by bus type.

Table 5: The Reports menu items

On the upper part of the screen you can see a list of all previously generated reports (if available). You can right click on a register to select between Viewing or Deleting the report.

Configuration

Use this module to define several program parameters:

- > Add, edit, or remove filtered classes
- > Define the scan interval (schedule)
- > Define the communication port
- > Chose the # of threads
- > Select the scan timeout
- > Opt to do a scan with the network user in case of the machine refusing the actual user's credentials.

Scan ranges

You can control the way scan are done in this module. You can perform scans by:

- > Computer name
- > IP address
- > Entire Active Directory Domain



Making an initial device scan

Your first task when using the program – unless you have previously done one – is to define the scan range (computer(s), IP address, or domain to scan). Once this done, you have several elements to play with:

- > A complete HTML report
- > Computer and device info
- > A raw XML device list

The procedure will be:

1. Configure the program using the *Configuration* module defining all required parameters
2. Define a scan filter using the *Scan Ranges* module
3. Scan your selected range using the scan module
4. Optionally, save your scan info as a XML file
5. Generate the required reports

We analyze each module in detail in the following sections.



You cannot scan machines that hide behind a firewall.



You cannot revert to the default settings if you modify them (in the Global Configuration window). Use the following table if you want to go back to the original configuration.



Setting	Default value
Scan interval	60 minutes
Scan threads	5
Communication port	7439
Scan timeout	60 sec.
Scan on connection failure	Not activated
Filtered classes	1394.*; 1394Debug.*; 61883.*; Battery.*; Bluetooth.*; Computer.*; Display.*; Dot4.*; Enum1394.*; fdc.*; hdc.*; HIDClass.*; ISDD.*; Keyboard.*; LegacyDriver.*; MEDIA.*; MdiaChanger.*; Monitor.*; Mouse.*; Mice and other.*; Net.*; NtApm.*; Player_Recovery_Device.*; Processor.*; RamDisk.*; SBP2.*; SCSIAdapter.*; SDHost.*; System Device.*; Unknown.*; USB.*; Volume.*; VolumeSnapshot.*; VSO Devices.*; WCEUSB.*

Table 6: Default configuration



The Scans module

When generating a scan, you can see the results in the *Scans* module main window:

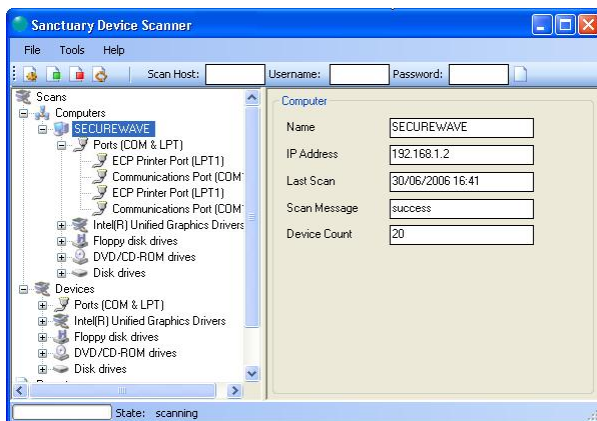


Figure 10: An example of the scan panel

Once a scan is generated – either by a new scan or by scheduling it –, you can proceed to get a report using the corresponding module. See *Reports* on page 23 for more information.



If you scan the same computer(s) several times, you may get duplicated registers in the tree view. Refresh (Tools→Refresh) the screen each time to get the updated view.

Scan parameters & details

The program generates a detailed device description (unless otherwise defined by the parameters and options of the *Filtered Classes* of the *Configuration* module) when doing a scan. All parameters controlling the scan results are defined on *The Configuration module* (page 27) or *The Scan Ranges module* (page 29).

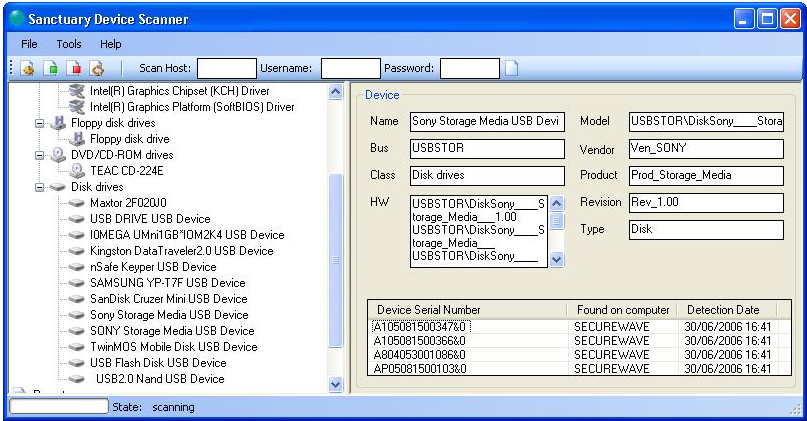


Figure 11: A device info example

If you select any of the removable storage devices you get, beside very detailed info, the device serial number of all specific devices of this particular type that have been connected to the selected range.

Starting a scan

You can start a new scan at any moment by using the options provided on the Tools menu or by right clicking on the Scans module:



Figure 12: The Tools menu

Using this menu, you can:

- > Start a scan
- > Start or stop the scheduler (does not work in interactive mode)
- > Update the main window

You can also do an immediate scan filling in the host, user's name, and password.



Log panel

If you are on the first level of this module (Scans), you can trace the scan progress using the log panel located on the lower part of the main window:

The screenshot shows a software interface with two main sections. The top section, titled 'Scans', contains five rows of data, each with a label and a text input field. The bottom section, titled 'Log', contains a text area with a log of system messages.

Scans	
Known Hosts	1
Known Devices	20
Total Scans	12
Last Scan	04/07/2006 13:30
Hosts in Last Scan	1

Log

```
04-07-2006 13:46:57 MESSAGE ConfigBean loading config
from [C:\Program Files\SecureWave\Sanctuary\DevScan2
\config.dat]
04-07-2006 13:47:00 MESSAGE Program starting sensor
service
```

Figure 13: Scan trace in the Log panel


Immediate scan


Use the Immediate Scan Bar to initiate a scan. To begin a scan, type in the host, user's name, and password and then click on the "Scan" icon located on the right part of this bar.



Reports

The Reports menu allows you to generate a variety of reports about device information including device name & class, bus type and host. The generated reports are HTML files that can be viewed using Internet Explorer or any other Web browser defined on your system. The reports can be printed, copied, converted, saved, and modified as required. Reports are created in the Report folder located in your *Program Files\SecureWave\Sanctuary\DevScan\reports* (unless otherwise specified on the installation).

 Once the output is shown in your favorite Web browser, you can use the 'Print' options to keep a hard copy backup of your report. Consult your browser help for details.

 You can change the way the date is formatted using the 'Regional and Language' options of the 'Control Panel' of your Windows system. Consult Windows Help for details.

 Reports are created using the respective template found in the <appinstall>\templates directory.

Reports are automatically saved – in the default \reports directory – and can be printed for your future reference.

The following table summarizes the types of reports that can be obtained when doing a scan or by loading a previous one:

Type of Report	Description
Device list	Use this command to obtain a report showing a complete device list.
Devices by host	Use this command to get a report order by host name.
Devices by class	This item lets you select a report classified by device class.
Devices by bus	Using this command, you can see a device list classified by bus type.

Table 7: Types of reports that can be obtained by a user



Generating a new report

You need to first generate a scan in order to create a valid (non empty) report. See *Making an initial device scan* on page 17 and *The Scans module* on page 19

To create a new report

1. Select *Reports* from the *Control Panel*. The following screen is displayed:

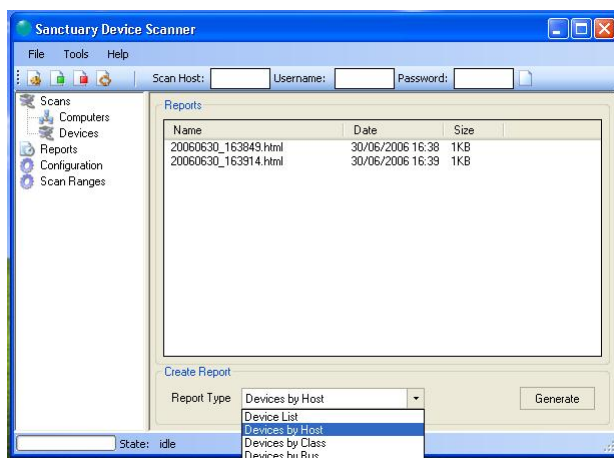
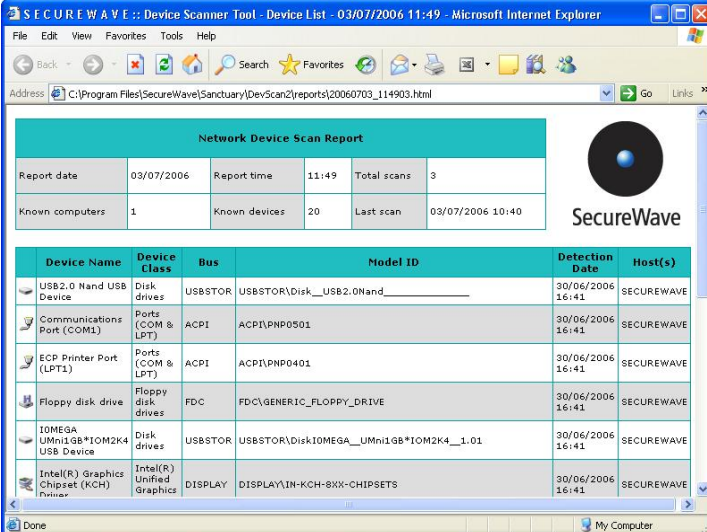


Figure 14: Creating a new device scan report

2. Select from the list the type of report you will like. Once you are ready to proceed, click on **GENERATE**. The report generation routine begins.
3. The program generates a final *Device List* (as an example) HTML report. This page is opened in your default Web browser:



The screenshot shows a web browser window titled "SECUREWAVE :: Device Scanner Tool - Device List - 03/07/2006 11:49 - Microsoft Internet Explorer". The address bar shows the URL "C:\Program Files\SecureWave\Sanctuary\DevScan2\reports\20060703_114903.html". The main content area displays a "Network Device Scan Report" with a summary table and a detailed device list table.

Network Device Scan Report					
Report date	03/07/2006	Report time	11:49	Total scans	3
Known computers	1	Known devices	20	Last scan	03/07/2006 10:40

Device Name	Device Class	Bus	Model ID	Detection Date	Host(s)
USB2.0 Hand USB Device	Disk drives	USBSTOR	USBSTOR\Disk_USB2.0Hand_____	30/06/2006 16:41	SECUREWAVE
Communications Port (COM1)	Ports (COM & LPT)	ACPI	ACPI\PNP0501	30/06/2006 16:41	SECUREWAVE
ECP Printer Port (LPT1)	Ports (COM & LPT)	ACPI	ACPI\PNP0401	30/06/2006 16:41	SECUREWAVE
Floppy disk drive	Floppy disk drives	FDC	FDC\GENERIC_FLOPPY_DRIVE	30/06/2006 16:41	SECUREWAVE
IONESA UMn1GB*1OM2K4 USB Device	Disk drives	USBSTOR	USBSTOR\DiskIONESA__UMn1GB*1OM2K4__1.01	30/06/2006 16:41	SECUREWAVE
Intel(R) Graphics Chipset (KCH) Device	Intel(R) Unified Graphics	DISPLAY	DISPLAY\IN-KCH-8X-CHIPSETS	30/06/2006 16:41	SECUREWAVE

Figure 15: Device list report

The report is also saved in the <appinstall>\reports\ folder. You can print it for future reference.

Saving a report

All generated reports are automatically saved in the <appinstall>\reports\ folder and shown in the *Reports* section of the module's main window. No user action is needed except for maintenance (deleting, viewing, or printing).

Viewing old reports

Every report is automatically saved in the <appinstall>\reports and can be located using Window's File Explorer if needed. The program also shows the list in the *Reports* section of the module's main window from where you can view them directly.

To view a report:

1. Select the register from the *Reports* list.
2. Right click on the register, double click on it, or press Enter to directly open the report in your predefine Internet browser. If right clicking on the register, select *View Report* from the popup menu.



Deleting old reports

Reports are never deleted and it is your responsibility to do so. To erase old reports:

1. Select the register from the *Reports* list.
2. Press Delete or right click on the register. If right clicking on the register, select *Delete Report* from the popup menu.
3. Click Yes on the confirmation dialog.

Printing a report

Reports are printed using your predefined Internet browser. To print a report, you must first open it and then select *File → Print* or *Ctrl+P* (if using Windows Internet Explorer).



The Configuration module

This module is used, in conjunction with the *Scans Ranges* module, to configure some of the scans global options.

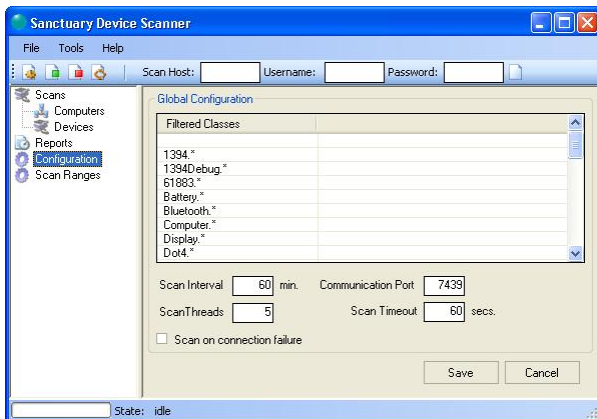


Figure 16: The Configuration module

Filtered classes

The upper part of this module's main screen shows a list of all classes that will be excluded from the scan even though they are, in essence, devices by their own. Examples of this are the video cards. As these cannot or may not be controlled using Sanctuary Device Control, there is no need to scan them. You can add, delete, or edit a filter by right clicking on the Filtered Classes panel:

To add a filter

Right click on the *Filtered Class* panel and select Add Filter from the popup menu.

Proceed to define the filter using a regular expression. It can be as simple as a wildcard character (Displ.*) or as complex as you need (^[\t]+*). Type in the filter in the field and click on **SAVE**.



Figure 17: Adding or modifying an exclusion filter

To edit a filter

Select from the list the register you want to edit and do a right click. Select *Edit Filter* from the popup menu. You will get the same dialog as for adding an exclusion filter. Change the field and click on **SAVE**.

To remove a filter

Select from the list the register you want to delete and do a right click. Select *Remove Filter* from the popup menu.

Other available options

The bottom part of the main window contains several other options related with the scans:

- > **Scan Interval:** Used for scheduling: defines the period (in minutes) between consecutive scans. You can restart a schedule by using the tools menu or Scans contextual menu.
- > **Scan Threads:** here you can also the number of parallel scan to be performed.
- > **Communication Port:** Port used by the Console to communicate with the scan service component. If the port number is changed, you will need to restart the scan service in order to make the change take effect. The scan service can be restarted by typing "net stop devsensor" in a DOS box, followed by a "net start devsensor".
- > **Scan timeout:** period (in seconds) before the program gives up a communication and proceed with the next one in the list.
- > **Scan on connection failure:** usually the scan is done using the credentials of the user defined in the Scan Ranges module. If this is not possible for some reason and this option is active, the program will try to do the scan using the service account which started the "DevSensor" service (usually NT Authority\NetworkService).



The Scan Ranges module

You can define precisely what should be scanned or not using this module.

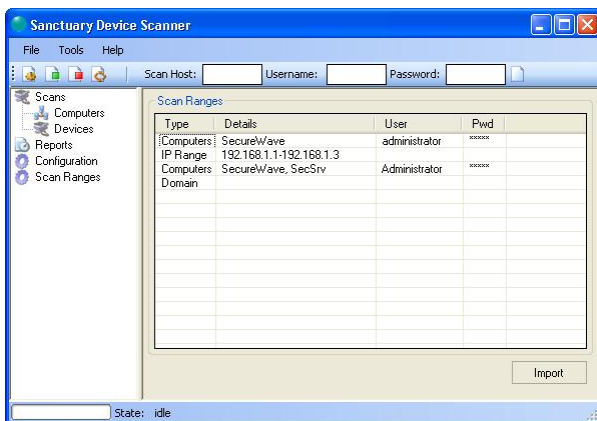


Figure 18: The Scan Ranges module main window

Adding, editing, or deleting ranges

If you right click on any part of the *Scan Ranges* module main window (or on a register if you want to edit or delete it) you get the following popup menu:



Figure 19: The Scan Ranges right click popup menu

Select the required option to add, edit, or delete a register as specified in the following sections.



Adding a rule

To add a new rule, follow these steps:

1. Right click on any part of the *Scan Ranges* module main window.
2. Select the type of scan: Computer, IP range, or Domain.

Depending of the selected type you get one of the following screens:



Figure 20: Scan Range for computers



Figure 21: The Scan Range for IP addresses

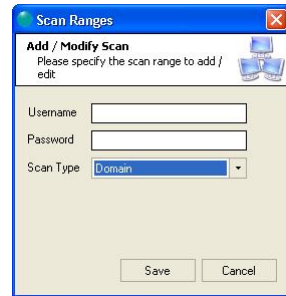


Figure 22: The Scan Range for a Domain

3. If required, type in the Username and password fields. If left empty, the service credentials are used.
4. Click on the **SAVE** button to close the dialog and keep your filter or on **CANCEL** to abandon the action.

If defining a computer range, type in name of the computer and end it with the ENTER key. You can also use the ellipsis button to search for them and add them using an auxiliary dialog:

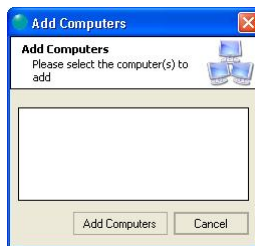


Figure 23: Selecting computers directly from the Add Computer dialog



Deleting a range

To delete a range, select it from the main window and right click on it. Select the *Remove Range* item from the popup menu.

Editing a range

You can edit a range by selecting it from the main window and right clicking on it to select the *Edit Range* item from the menu. Once the Scan Ranges dialog is opened, edit the parameters directly on each required field.

Importing ranges

You can directly import an IP addresses range or computer list to rapidly populate the scan range by clicking on the **IMPORT** button located on the lower right part of the window. You are presented with a dialog from where you can directly type the name of the file (including the complete path) or search for it using the ellipsis button. Once the file located, click on the **IMPORT** button to complete the process or on **CANCEL** to close the dialog without importing the file.

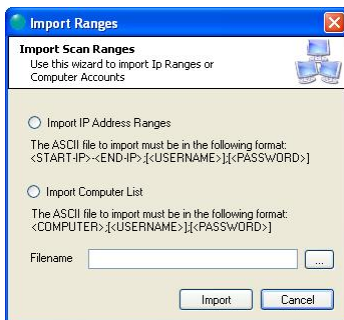


Figure 24: Importing an IP address or computer range list to scan



If you import a range and do not select the proper option, the list would not be correctly recognized.



The Sensor service

Sanctuary Device Scanner works based on a service plus a control console where all scans, reports, and configuration is done.


Using Windows START button (or  key), you can directly access the service or console.



Figure 25: The Windows' Start menu

You can see that there is one option to open the console while the other three ones are used to control the service.

Starting and stopping the service

There are times where you do not want the service to continue running once you are not using the console or the other way around.

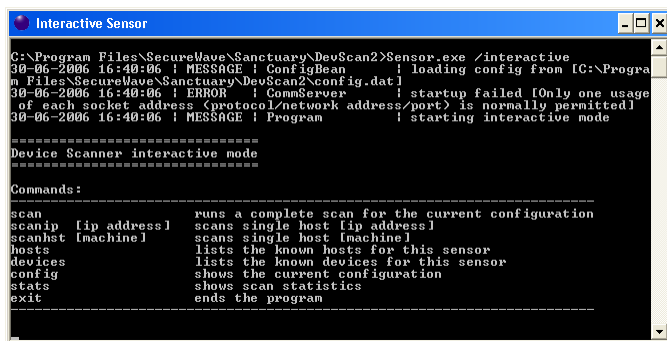
The last two options of the start menu are use to start and stop the sensor service.



Interactive sensor

The use of the interactive mode of the sensor service is recommended for debugging purposes or to get a detailed scan log.

To use the service interactively, just select it from the Start menu and type in the required command (scan, scanip, scanhost, hosts, devices, config, stats, exit)



```
Interactive Sensor
C:\Program Files\SecureWave\Sanctuary\DevScan2>Sensor.exe /interactive
30-06-2006 16:40:06 | MESSAGE | ConfigBean | loading config from [C:\Program Files\SecureWave\Sanctuary\DevScan2\config.dat]
30-06-2006 16:40:06 | ERROR | CommServer | startup failed [Only one usage of each socket address (protocol/network address/port) is normally permitted]
30-06-2006 16:40:06 | MESSAGE | Program | starting interactive mode

=====
Device Scanner interactive mode
=====

Commands :
-----
scan          runs a complete scan for the current configuration
scanip [ip address] scans single host [ip address]
scanhost [machine] scans single host [machine]
hosts         lists the known hosts for this sensor
devices       lists the known devices for this sensor
config        shows the current configuration
stats         shows scan statistics
exit          ends the program
-----
```

Figure 26: The Configuration module

If you want to create a log, redirect the output from the command line as in the following example:

```
C:\Program Files\SecureWave\Sanctuary\DevScan\sensor.exe -scan > log.txt
```



Requirements and Limitations

In order to be able to use Sanctuary Device Scanner tool, you need to comply with the following requirements:

1. The workstations to be scanned must have the *Remote Registry* service installed and running before doing a scan.



Remember that activating this service may allow other user to edit your registry remotely but can also allow the administrator to remotely audit the company's client machines.

2. The computer(s) to be scanned must be turned on and connected to the current domain during the scan process.
3. Device Scanner does not work (or works partially) when installed on a Windows 2003 Sp1 OS.
4. Computers behind firewalls are not scanned.



Glossary

Class

A *device class* is a collection of devices that have similar characteristics and that can be managed in a similar manner; for example, a Palm V5x device belongs to the Palm Device Class.

HTML

HyperText Markup Language is a language used for the creation of Web pages and other information to be displayed in a Web browser.

Remote Registry service

A Windows' service that, when activated, allows a remote user to read or modify registries in the local computer.

Service

A program, working in the background, that offers certain functionalities needed (or not) by the operating system.

Template

A predefined layout used by the program to create the reports.

XML

The *Extensible Markup Language* is a general-purpose markup language capable of describing many different kinds of data. Its primary purpose is to facilitate the sharing of data across different systems



Index of figures

Figure 1: Installation: welcome dialog	7
Figure 2: Installation: license agreement	7
Figure 3: Installation: installation folder	8
Figure 4: Installation: starting the installation procedure	8
Figure 5: Installation: ending the installation	9
Figure 6: Installation: Start menu shortcuts	9
Figure 7: Program's window.....	11
Figure 8: Example of a scan	14
Figure 9: Scan trace in the Log panel	14
Figure 10: An example of the scan panel	19
Figure 11: A device info example	20
Figure 12: The Tools menu.....	20
Figure 13: Scan trace in the Log panel.....	21
Figure 14: Creating a new device scan report.....	24
Figure 15: Device list report.....	25
Figure 16: The Configuration module	27
Figure 17: Adding or modifying an exclusion filter	28
Figure 18: The Scan Ranges module main window.....	29
Figure 19: The Scan Ranges right click popup menu	29
Figure 20: Scan Range for computers.....	30
Figure 21: The Scan Range for IP addresses.....	30
Figure 22: The Scan Range for a Domain	30
Figure 23: Selecting computers directly from the Add Computer dialog	30
Figure 24: Importing an IP address or computer range list to scan.....	31
Figure 25: The Windows' Start menu	33
Figure 26: The Configuration module.....	34



Index of Tables

Table 1: The three available menus in Sanctuary Device Scanner	12
Table 2: The File menu items.....	13
Table 3: The Tools menu items.....	13
Table 4: The Help menu items	13
Table 5: The Reports menu items	15
Table 6: Default configuration.....	18
Table 7: Types of reports that can be obtained by a user	23



Index

C

- Class; 37
- Configuration module; 27
- Contact information; 6
- Control panel; 14
 - Configuration; 15
 - reports; 15
 - Scan ranges; 15
 - Scans; 14

F

- File
 - Exit; 13
 - New; 13
- Filtered classes; 27
 - Add a filter; 27
 - Edit a filter; 28
 - Other options; 28
 - Remove a filter; 28

G

- Glossary; 37

H

- Help
 - About; 13
 - Main help; 13
 - Web site; 13
- Help menu; 13
- HTML; 37

I

- Initial scan; 17
- Installing; 7

M

- Menus; 12

- File*; 12
- Help*; 12, 13
- Tools*; 12, 13

O

- Overview; 5

P

- Program main window; 11

R

- Remote Registry service; 37
- Reports; 23
 - Create; 24
 - Delete; 26
 - Device list; 15, 23
 - Devices by bus type; 15, 23
 - Devices by device class; 15, 23
 - Devices by host; 15, 23
 - Generate new; 24
 - Print; 26
 - Save; 25
 - Show old; 25
- Requirements; 35

S

- Sanctuary Device Scanner
 - Menu bar; 11
 - Program main window; 11
 - Scan Control panel; 12
 - Scan Main window; 12
 - Scan Toolbar; 12
 - Status bar; 12
- Scan
 - Parameters & details; 19
 - Starting; 20
- Scan Ranges module; 29
 - Add rule; 30
 - Delete range; 31
 - Edit range; 31



- Scans module; 19
- Sensor service; 33
 - Interactive; 34
 - Log to a file; 34
 - Start; 33
 - Stop; 33
- Service; 37
- Starting
 - Sanctuary Device Scanner; 11

T

- Template; 37

- Tools
 - Scan network; 13

U

- Uninstalling; 10

X

- XML; 37